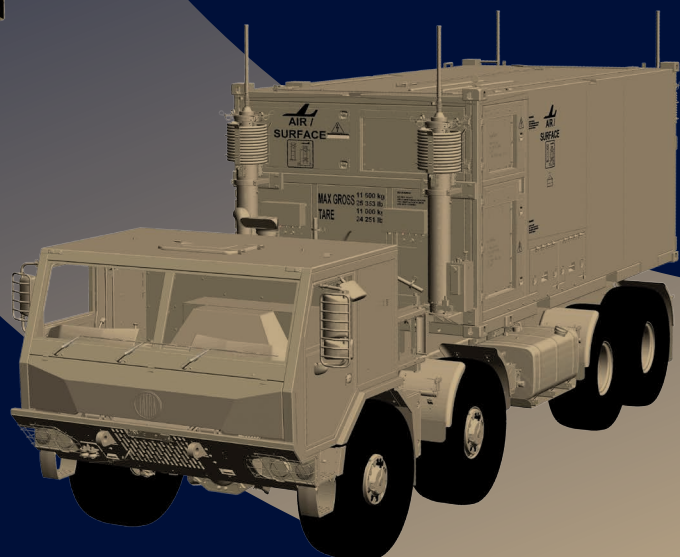
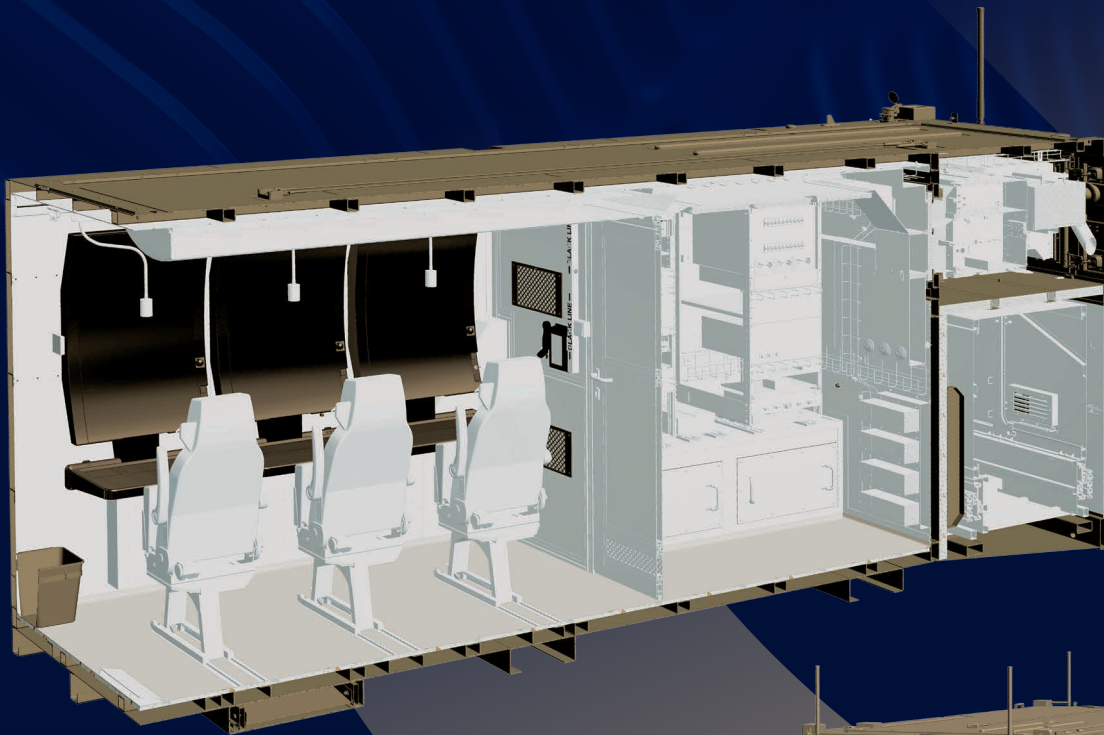


# FCC02

# ReCUBE gbad

The FCC is mobile command-and-control platform for Ground-Based Air Defence (GBAD), providing fully integrated, real-time control of all system sensors and effectors. Leveraging state-of-the-art computing and communication technologies, the system enables rapid deployment in the field and maintains full operational capability even in demanding environments. Data links are established via high-speed optical fibers and secure radio communications, ensuring continuous, safe, and resilient connectivity across the entire GBAD architecture.



## CAPABILITIES

- Real-time command and control of an anti-aircraft battery
- Resilience against ECCM measures
- Operation in NATO SECRET mode
- Highly mobile platform

## KEY FEATURES

- Automatic air picture updates driven by sensor data and effector command integration
- Automatically classify threats and recommend the most effective weapon system to deal with them
- Full interoperability – real-time communication with both superior and subordinate units
- Integrate information of friendly command nodes
- Integrate Global Navigation Satellite system (GNSS)

## KEY BENEFITS

- Comfortable and ergonomic workspace for system operators
- Resistance to jamming and interception
- Always mission-ready in ISO 1C container mounted on vehicle
- Easy transportation (C130)
- Only two operators are needed to run the Center at full capacity.
- Ready for future SATCOM integration
- Two-way voice and data communication via radio and landline datalinks
- ITAR free

Parameter	Parameter, Feature	Notes
Security level	NATO SECRET	designed in accordance with
Crew	3 operators	2 operators required
Target capacity	>200	
Base diension (folded)	20 x 8 ft	ISO1C 20 ft platform
Deployment time	< 15 min	
Activation time	< 5 min	deployed system
Data communicationa	radio, landline datalinks	
Communication Interfaces (software & hardware)	ethernet wired or optical, etc.	TCP, UDP/IP, ASTERIX, costumer defined
Power supply	integrated generator	Operating 8 hours without refueling
Operating Temperature Range	-32 °C ÷ +50 °C	
Storage Temperature Range	-33 °C ÷ +63 °C	
Operating altitude	up to 2000 a.s.l.	
Wind resistance	15 m/s	
Complies with	MIL-STD-810H, MIL-STD-1472H	