

SW BRO

Battle Resource Optimization Systems

BRO – ACTIONABLE RECOMMENDATIONS

- Pre-mission planning
- In-mission performance estimation
- Real-time actionable recommendations
- Post-mission debriefing

MULTI-MISSIONS:

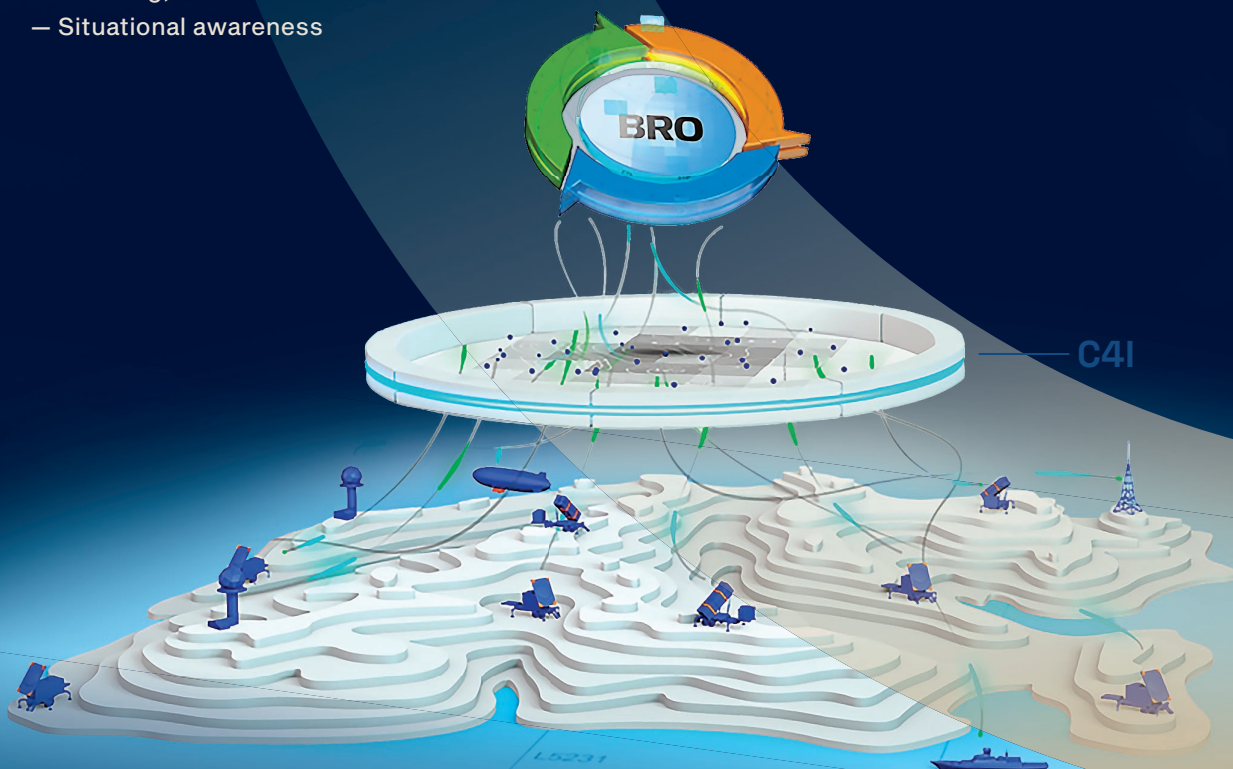
Defense | Intelligence | Attack

MULTI-DOMAINS:

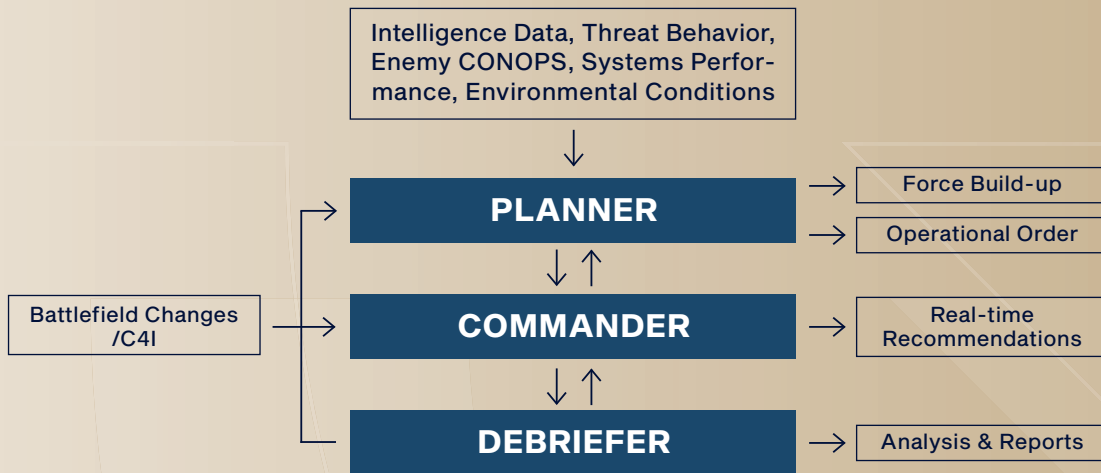
Space | Air | Sea | Land | Spectrum

C4I – SITUATION PICTURE

- Real-time picture
- Data fusion
- Tracking, classification
- Situational awareness



BRO Operational Flow



TACTICAL BATTALION CONFIGURATION OPTIMIZED FOR:

- Single Battery
- Quick deployment
- Light rugged hardware



REGIONAL BRIGADE CONFIGURATION OPTIMIZED FOR:

- Central regional mission planning
- Multi-Battery support
- Deployable workstation



STRATEGIC DIVISION CONFIGURATION OPTIMIZED FOR:

- Multi-User – Multi-Mission planning
- Country wide central strategic planning
- Scalable user private cloud implementation

AT THE PLANNING STAGE:

- Enhances AD mission effectiveness through optimized deployment of GBAD systems
- Optimal courses of action (COAs) based on weaponsystem potential performance, intelligence data, topography and environmental conditions
- AI-driven analyses of the most challenging threat infiltration routes
- Development and validation of strategic CONOPS and rules of engagement

AT THE REAL-TIME STAGE (INTEGRATED WITH C4I):

- Assessment of actual air defense capabilities – detection and interception
- Prediction of threat trajectories, defense gaps, and kill zone area understanding, once the treat is detected
- Real-time alerts on sensor anomalies impacting the air defense picture
- Active recommendations based on weapon systems readiness and availability, intelligence information, and environmental data updates